



CONSTANT

this is a fairly crude linear analog VCO intended for applications that do not require chromatic pitch tracking. the rate / pitch will respond to voltage control over a wide range, it has a variable wave shape from tri to square via a pot, and it has a switchable pitch range.

the rate and shape pot can either be panel mounted or you can just wire them up with the hookup wire provided. the pin choices are just suggestions.

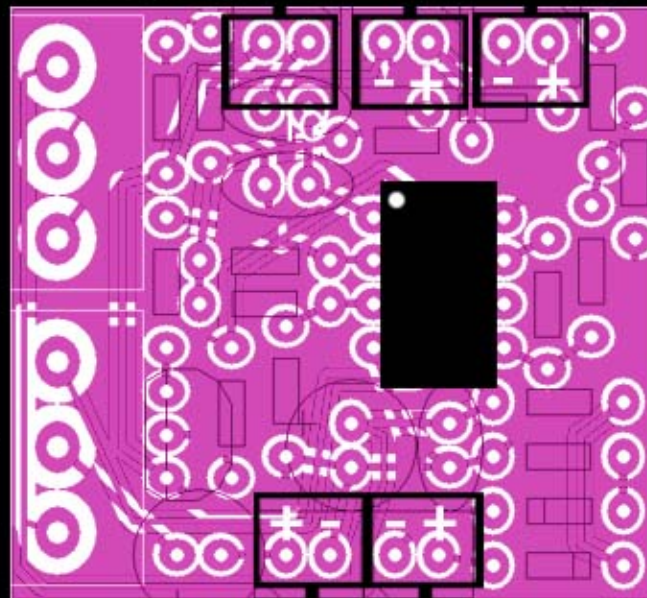
the range switch will extend the over all pitch range

the voltage control inputs are both for rate modulation, i just added a second because there was space and its nice to have two

top view

range switch RATE CV 1 RATE CV 2

RATE POT 1M



SHAPE POT 250k or 500k

output power supply

power supply range from 3 volts DC to 15 volts DC

current required - less then 3ma

length and width dimensions—1-1/2" x 1-3/8" or 39mm x 33mm

height dimensions - without pots 7/16" or 15mm / with pots 15/16" or 24mm

top view



pot wiring for passive volume control -
input and output labels are for the pot
not the device - any value will work but
100k works best for me in most cases -
experiment

© 2007 laac | all rights reserved

<http://thesquarewaveparade.com/constant.html>